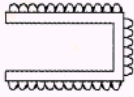
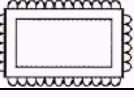
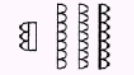

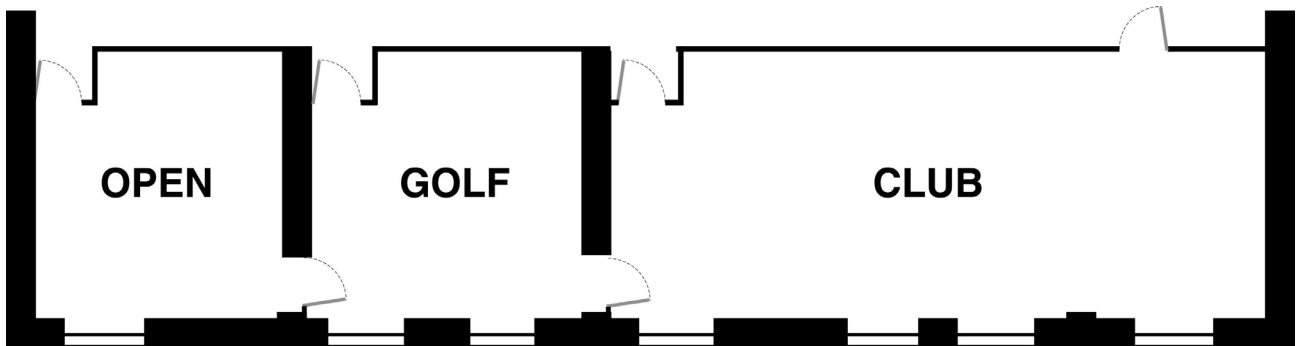


# CHATEAU DE LA COUHARDE GOLF DES YVELINES

## LES SALONS DE REUNION ET DE RECEPTION *MEETING AND RECEPTION ROOMS*

	OPEN	GOLF	CLUB	RESTAU 1	RESTAU 2	TERRASSE
Surface / Area	28 m <sup>2</sup>	31 m <sup>2</sup>	78 m <sup>2</sup>	60 m <sup>2</sup>	40 m <sup>2</sup>	120 m <sup>2</sup>
Tables en U / <i>U shape</i>	 14	16	34			
Table pleine / <i>Conference</i>	 14	20	40			
Style Théâtre / <i>Theatre</i>	 30	30	80			
Cocktail / <i>Reception</i>			100	60	40	120

### Plan 1<sup>er</sup> Etage



### Plan RdC

